



Korchek Report System Quick Start Guide

Version 1.0



Table of Contents

Table of Contents	2
1.0 Introduction	3
2.0 Quick Setup.....	4
2.1. Prerequisites	4
2.2. Installation Steps.....	5

1.0 Introduction

The Korchek Report System helps you leverage your existing Healthcare Information Systems (HIS) by providing packages of reports for common data, workflow, and audit inquiries.

2.0 Quick Setup

2.1. Prerequisites

In order to use the Korchek Report System, you need to have one of the flowing blood bank database software environments installed, configured, and in-production at your hospital:

- Horizon Blood Bank™
- SafeTrace Tx™

System Requirements

- Supported Operating System: Windows XP SP 2 or later, Windows Vista, Windows 7, Windows Server 2003 SP1, Windows Server 2008
- Processor: 400 MHz Pentium III or equivalent (Minimum); 1 GHz Pentium III or equivalent (Recommended)
- RAM: 256 MB (Minimum); 512 MB (Recommended)
- Hard Disk: Typically, approximately 250 MB (up to 1 GB on some systems) of hard drive space will be required (includes .NET 3.5, Crystal Reports Runtime, and Oracle Basic and Lite Client installs)
- Display: 800 x 600, 256 colors (Minimum); 1024 x 768 high color, 32-bit (Recommended)

Software Requirements

All required software components are packaged and redistributed with the Korchek Report System, including:

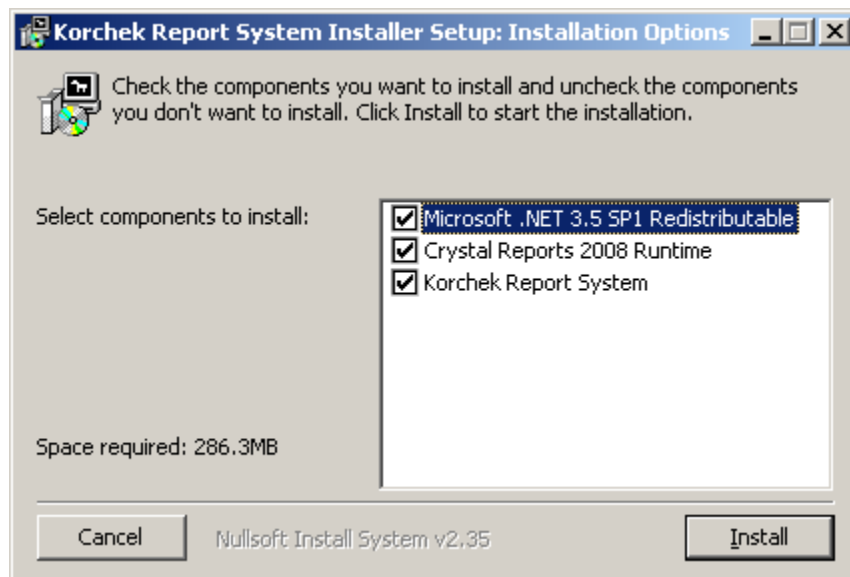
- Crystal Reports 2008 Runtime
- Microsoft .NET 3.5 SP1 Runtime
- Oracle Basic and Lite Client

2.2. Installation Steps

Step 1 – Log into the computer on which you wish to install the software as an Administrator. Make sure the computer meets all necessary requirements as listed in **Section 2.1 - Prerequisites**.

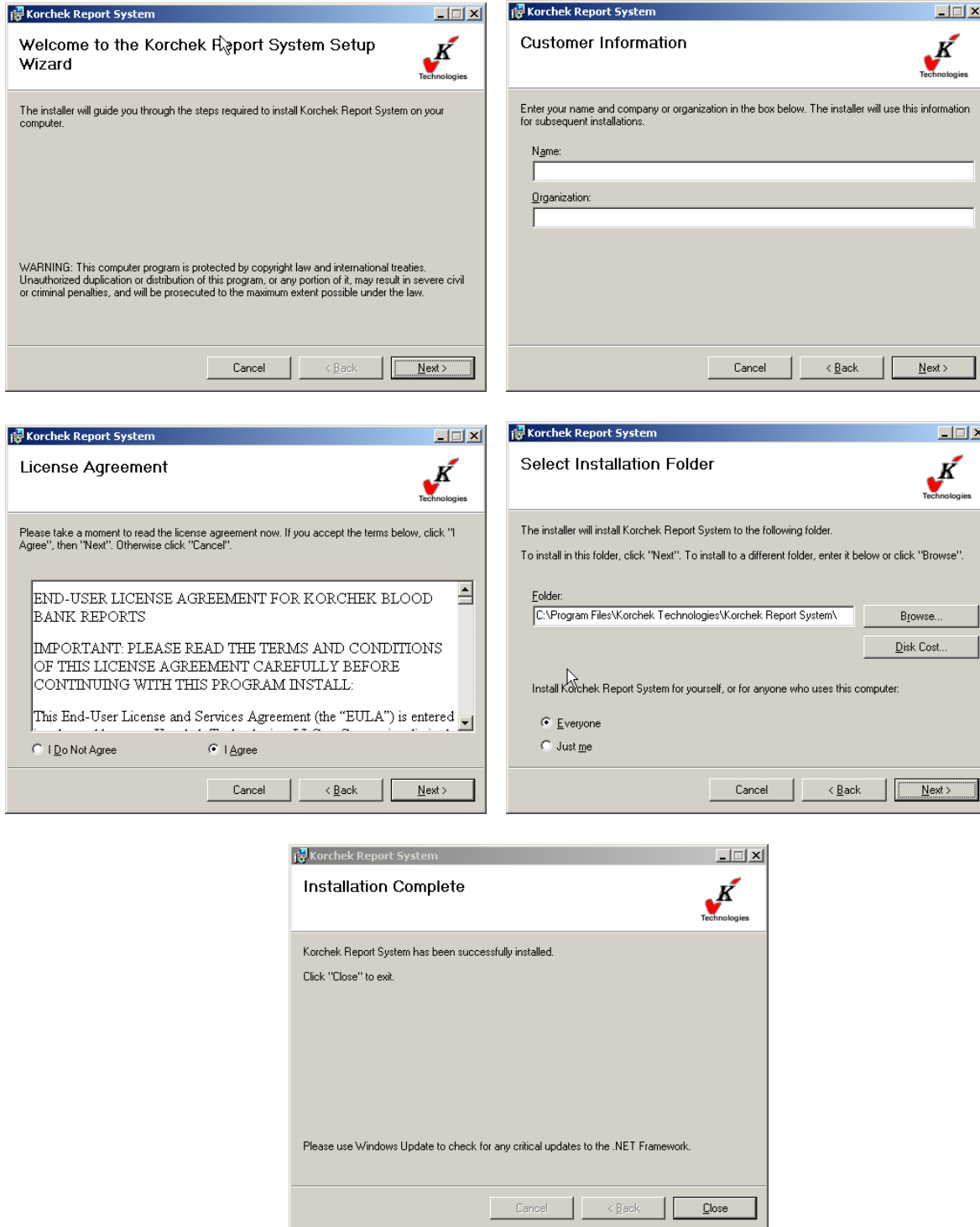
Step 2 – Locate and launch the “Korchek Report System Setup.exe” file.

Figure 1: Korchek Report System Installer



Step 3 – You will see the above screen. Select the components you wish to install and click continue. You will not need to install a component that already exists on your computer. You can check to see if any of the above components are installed by checking under **Control Panel > Add/Remove Programs**.

Figure 2: Installation Wizard



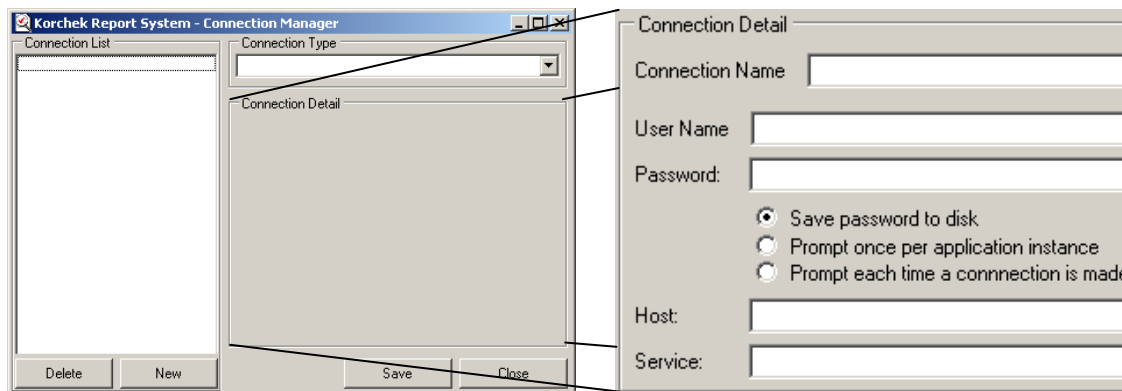
Step 4 – If you selected to install either the Microsoft .NET 3.5 SP1 Redistributable or the Crystal Reports 2008 Runtime packages, the installation for these will proceed

automatically. Once these installations are complete you will be prompted with the above sequence of screens. After providing the Customer Information and accepting the License Agreement, determine where you want to install the software or use the default settings. Once you are satisfied with your choices on the each screen, click **Next** to continue the installation.

Step 5 – The installation is complete. Click **Close** to close the installer. You can launch the program by clicking the **Korchek Report System** shortcut on your desktop or from the Start Menu.

Step 6 – When launching the application, you will be prompted to enter a license. Enter a license if one is available. Otherwise, click **Free Trial** to begin your 30-day free trial.

Figure 3: Connection Information Screen



Step 7 – Select **Connection > Connection Configuration** from the menu. Create a new connection and select **HBB/Safetrace Tx** as the connection type.

Enter the following information corresponding to your HBB™ or SafeTrace Tx™ system. Click **Save** when you have entered all of the information.

User Name – This is the user name reserved for reporting services for your medical database system. Contact your administrator for this information.

Password – This is the password that corresponds to the user name for the reporting services of your medical database system. Contact your administrator for this information.

Password Options – For security reasons there are 3 ways to store the connection password.

- The *Save password to disk* option will store the password for the connection and use the stored password every time a report is loaded.
- The *Prompt once per application instance* option will ask for the password when loading the first report after starting the application. The password will remain stored in memory until the application is closed.
- The *Prompt each time a connection is made* option will ask you to enter your connection password each time you load a report.

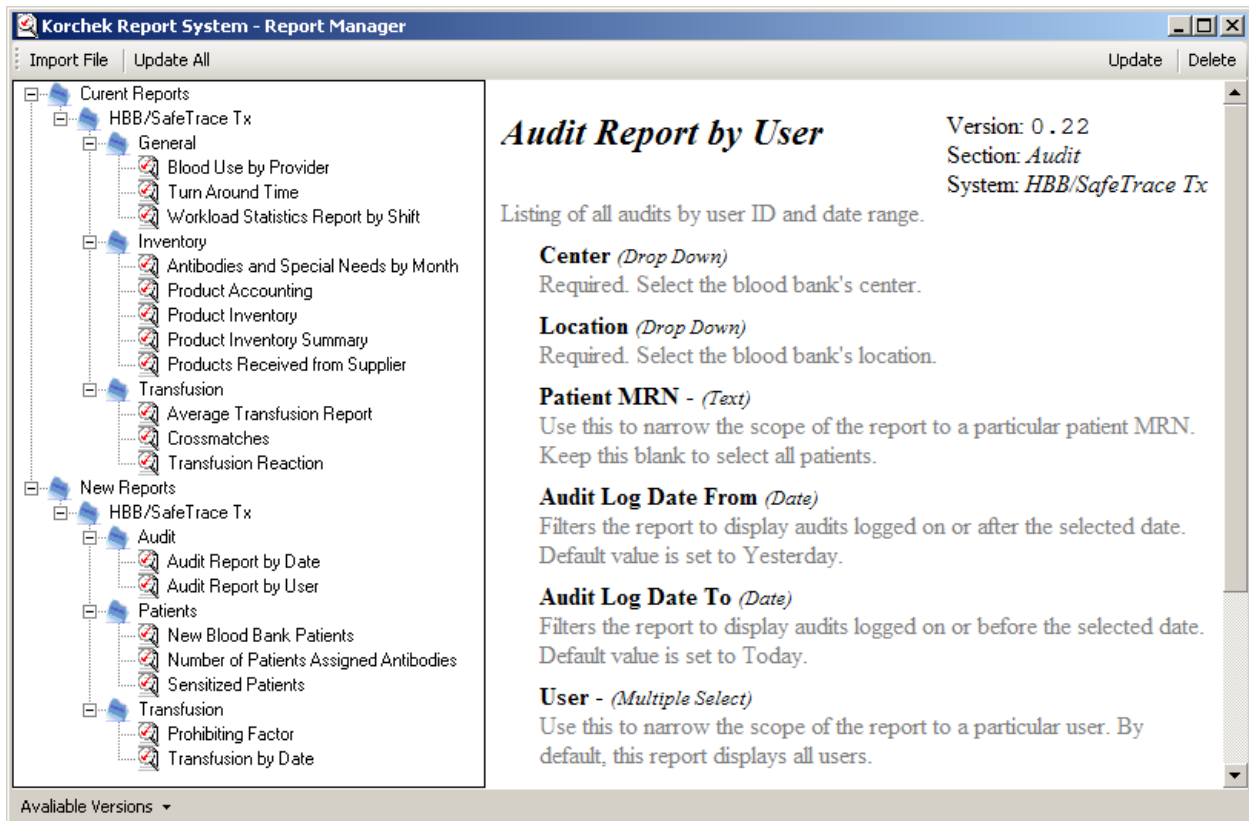
Host – This is the IP address or hostname of your blood bank database. Contact your administrator or IT department for this information.

Service – This defines whether you are connecting to a validation, production, or training environment. Use the corresponding service name for the environment to which you wish to connect (ex. "prod" for production, "vali" for validation).

Step 8 – After building the connection, select **Connection > Connection Name** (replacing **Connection Name** with the name of the

connection you just created) from the menu to set this as your current connection (you will see a check mark next to the name once it is selected).

Figure 4: Report Manager Dialog



Step 9 – Open the **Report Manager** dialog by selecting the **File > Report Manager** menu item. Click the **Update All** to get the latest version of reports.